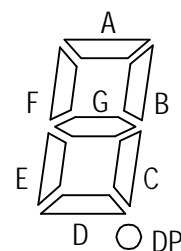
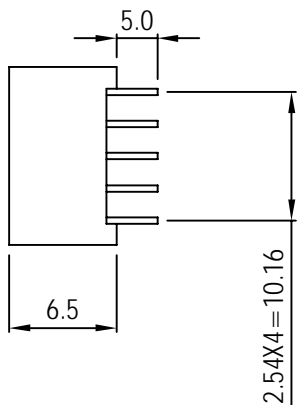
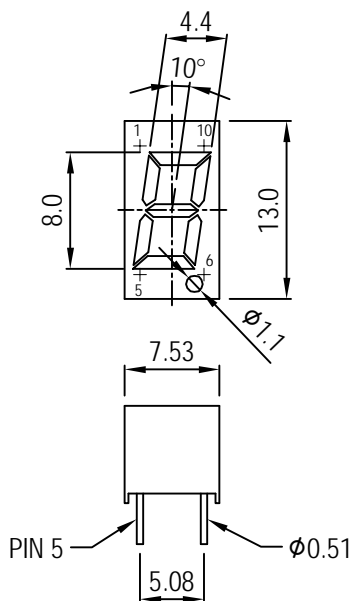


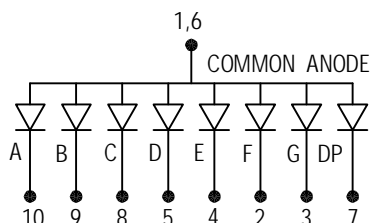
JOINSCAN LEDs

S.32A 0.32 INCH (8.0mm) SINGLE DIGIT 13 X 7.53 X 6.5mm

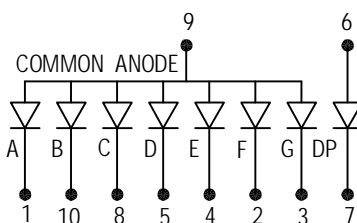


UNIT : mm
TOLERANCE : ±0.2mm

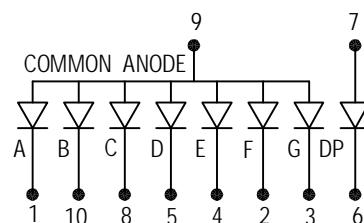
A. A3218 SERIES



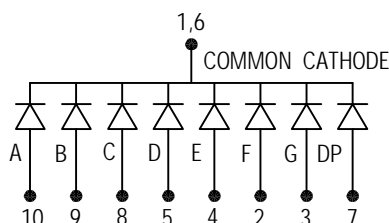
C. A3216 SERIES



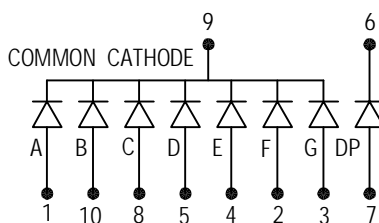
E. A3217 SERIES



B. C3218 SERIES



D. C3216 SERIES



PIN FUNCTION	COMMON ANODE			COMMON CATHODE			WAVE LENGTH (nm)	IR MAX (µA) VR=5V	VF (V) IF=20mA	LUMINOUS INTENSITY IF=20mA
	A	C	E	B	D	F				
GaP RED	A3218H	A3216H	A3217H	C3218H	C3216H		695	100	2.2	0.4mcd
GaAsP ORANGE RED	A3218O	A3216O	A3217O	C3218O	C3216O		630	100	2.0	2.5mcd
GaP GREEN	A3218G	A3216G	A3217G	C3218G	C3216G		570	100	2.2	4.5mcd
Gap Yellow	A3218Y	A3216Y	A3217Y	C3218Y	C3216Y		600	100	2.2	2.5mcd
GaAlAs SUPER RED	A3218RS	A3216RS	A3217RS	C3218RS	C3216RS		650	100	1.8	3.0mcd
GaAlAs ULTRA RED										
GaAlAs YELLOW GREEN										
Sic BLUE	A3218SF	A3216SF	A3217SF	C3218SF	C3216SF		465±5	100	3.6	5.0mcd
ZnSe WHITE										

Model No. -BW BLACK SURFACE WHITE SEGMENT
-BR BLACK SURFACE RED SEGMENT
-GW GRAY SURFACE WHITE SEGMENT

Remark :

1. Typical forward current 10-20mA, MAXimum forward current 25mA
2. Solder Temperature 1.6mm Below Seating plane less 5 seconds at 260°C +5°C -30°C
3. Peak Forward current Per Dice, Duty cycle 1/10, 10KHZ, MAXimum 120mA
4. Operating Temperature From -25°C to 85°C
5. RoHS COMPLIANT

REV : B