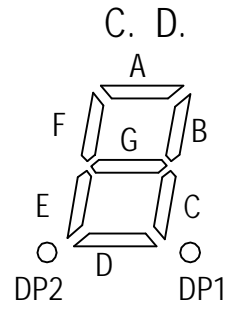
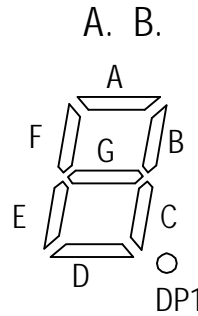
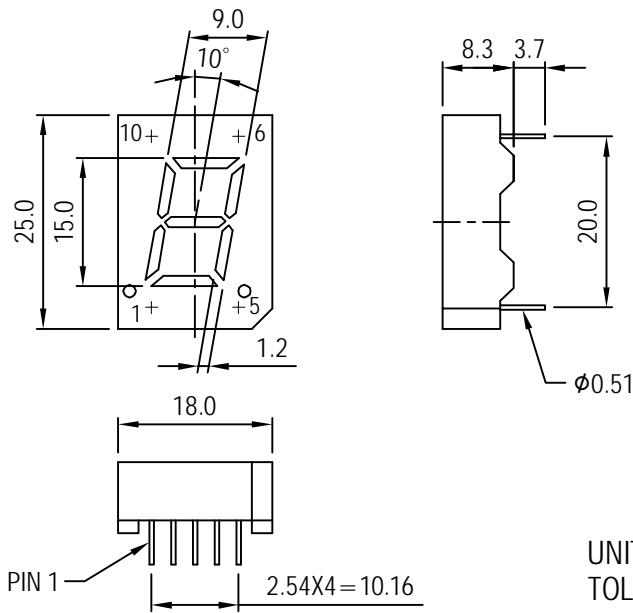


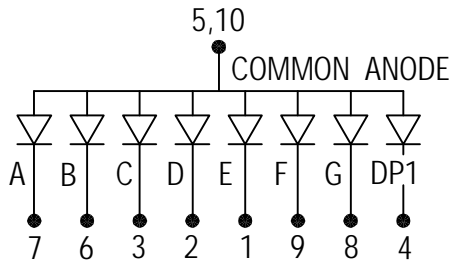
JOINSCAN LEDs

S.60A 0.60 INCH (15.0mm) SINGLE DIGIT 25 X 18 X 8.3mm

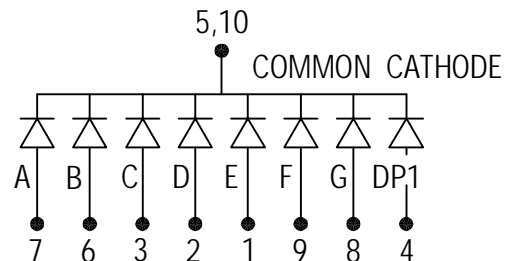


UNIT : mm
TOLERANCE : ±0.2mm

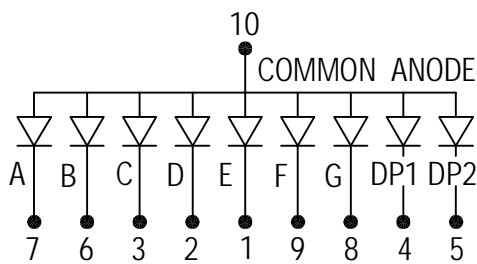
A. A6018 SERIES



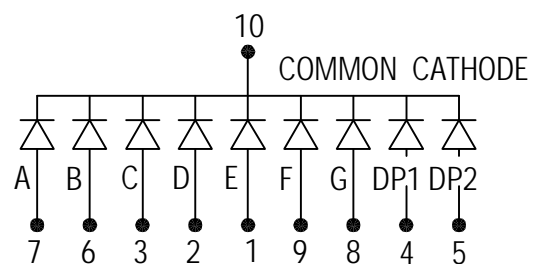
B. C6018 SERIES



C. A6019 SERIES



D. C6019 SERIES



PIN FUNCTION	COMMON ANODE			COMMON CATHODE			WAVE LENGTH (nm)	IR MAX (uA) VR=5V	VF (V) IF=20mA	LUMINOUS INTENSITY IF=20mA
	A	C	E	B	D	F				
Emitting COLOR	model no.	model no.	model no.	model no.	model no.	model no.				
GaP RED	A6018H	A6019H		C6018H	C6019H		695	100	2.2	0.4mcd
GaAsP ORANGE RED	A6018O	A6019O		C6018O	C6019O		630	100	2.0	2.5mcd
GaP GREEN	A6018G	A6019G		C6018G	C6019G		570	100	2.2	4.5mcd
Gap Yellow	A6018Y	A6019Y		C6018Y	C6019Y		600	100	2.2	2.5mcd
GaAlAs SUPER RED	A6018RS	A6019RS		C6018RS	C6019RS		650	100	1.8	3.0mcd
GaAlAs ULTRA RED										
GaAlAs YELLOW GREEN										
Sic BLUE	A6018SF	A6019SF		C6018SF	C6019SF		465±5	100	3.6	5.0mcd
ZnSe WHITE										

Model No. -BW BLACK SURFACE WHITE SEGMENT
-BR BLACK SURFACE RED SEGMENT
-GW GRAY SURFACE WHITE SEGMENT

Remark :

1. Typical forward current 10-20mA · MAXimum forward current 25mA
2. Solder Temperature 1.6mm Below Seating plane less 5 seconds at 260°C +5°C -30°C
3. Peak Forward current Per Dice · Duty cycle 1/10 · 10KHZ · MAXimum 120mA
4. Operating Temperature From -25°C to 85°C
5. RoHS COMPLIANT

REV : B